



**India Meteorological Department
(Ministry of Earth Sciences)**

National Bulletin No. 43 (ARB/02/2025)

TIME OF ISSUE: 1945 HOURS IST

DATED: 07.10.2025

FROM: INDIA METEOROLOGICAL DEPARTMENT (FAX NO. 24643965/24699216/24623220)
TO: CONTROL ROOM, NDM, MINISTRY OF HOME AFFAIRS (FAX.NO. 23093750)
CONTROL ROOM NDMA (FAX.NO. 26701729)
CABINET SECRETARIAT (FAX.NO.23012284, 23018638)
PS TO HON'BLE MINISTER FOR S & T AND EARTH SCIENCES (FAX NO.23316745)
SECRETARY, MOES (FAX NO. 24629777)
H.Q. (INTEGRATED DEFENCE STAFF AND CDS) (FAX NO. 23005137/23005147)
D.G. INDIAN COAST GUARD: (FAX No. 011-23383196)
DIRECTOR GENERAL, DOORDARSHAN (23385843)
DIRECTOR GENERAL, AIR (23421105, 23421219)
PIB MOES (FAX NO. 23389042)
UNI (FAX NO. 23355841)
D.G. NATIONAL DISASTER RESPONSE FORCE (NDRF) (FAX NO. 26105912, 2436 3260)
DIRECTOR, PUNCTUALITY, INDIAN RAILWAYS (FAX NO. 23388503)
CHIEF SECRETARY, MAHARASHTRA (FAX NO. 022-22028594)
CHIEF SECRETARY, GUJARAT (FAX NO. 079-23250305)
CHIEF SECRETARY, GOA (FAX NO. 0832-2415201)
CHIEF SECRETARY, KARNATAKA (FAX NO. 080-22258913)
CHIEF SECRETARY, KERALA (FAX NO. 0471-2327176)
ADMINISTRATOR, DADRA & NAGAR HAVELI (FAX NO. 0260-2645466/ 22307000)
ADMINISTRATOR, DAMAN & DIU (FAX NO. 0260-2230775)
ADMINISTRATOR, LAKSHADWEEP (FAX NO. 04896- 268124)

Subject: Depression (Remnant of Cyclonic Storm "Shakhti" [Pronunciation: Shakhti]) weakened into a well marked low pressure area over westcentral Arabian Sea

The Depression (Remnant of Cyclonic Storm "Shakhti" [Pronunciation: Shakhti]) over westcentral and adjoining northwest Arabian Sea moved east-southeastwards and weakened into a well marked low pressure at 1730 hrs IST of today, the 7th October, 2025 over westcentral Arabian Sea.

It is likely to continue to move east-southeastwards over westcentral Arabian Sea and weaken further into a low pressure area by 8th October morning.

Wind warning:

- Strong wind speed reaching 20-30 kmph gusting to 40 kmph is likely to prevail over westcentral Arabian Sea till 8th morning. It would gradually decrease thereafter.

Sea condition:

- Sea condition is likely to be moderate over Westcentral Arabian Sea till 8th October morning and improve thereafter.

Fishermen warnings:

Fishermen are advised not to venture into Westcentral Arabian Sea till 8th October morning.

This is the last update in association with this system. However, regular weather bulletins will continue from National Weather Forecasting Centre in association with the Well Marked Low Pressure Area and its remnant over westcentral Arabian Sea.

**(M. Sharma)
Scientist-E, IMD, New Delhi**

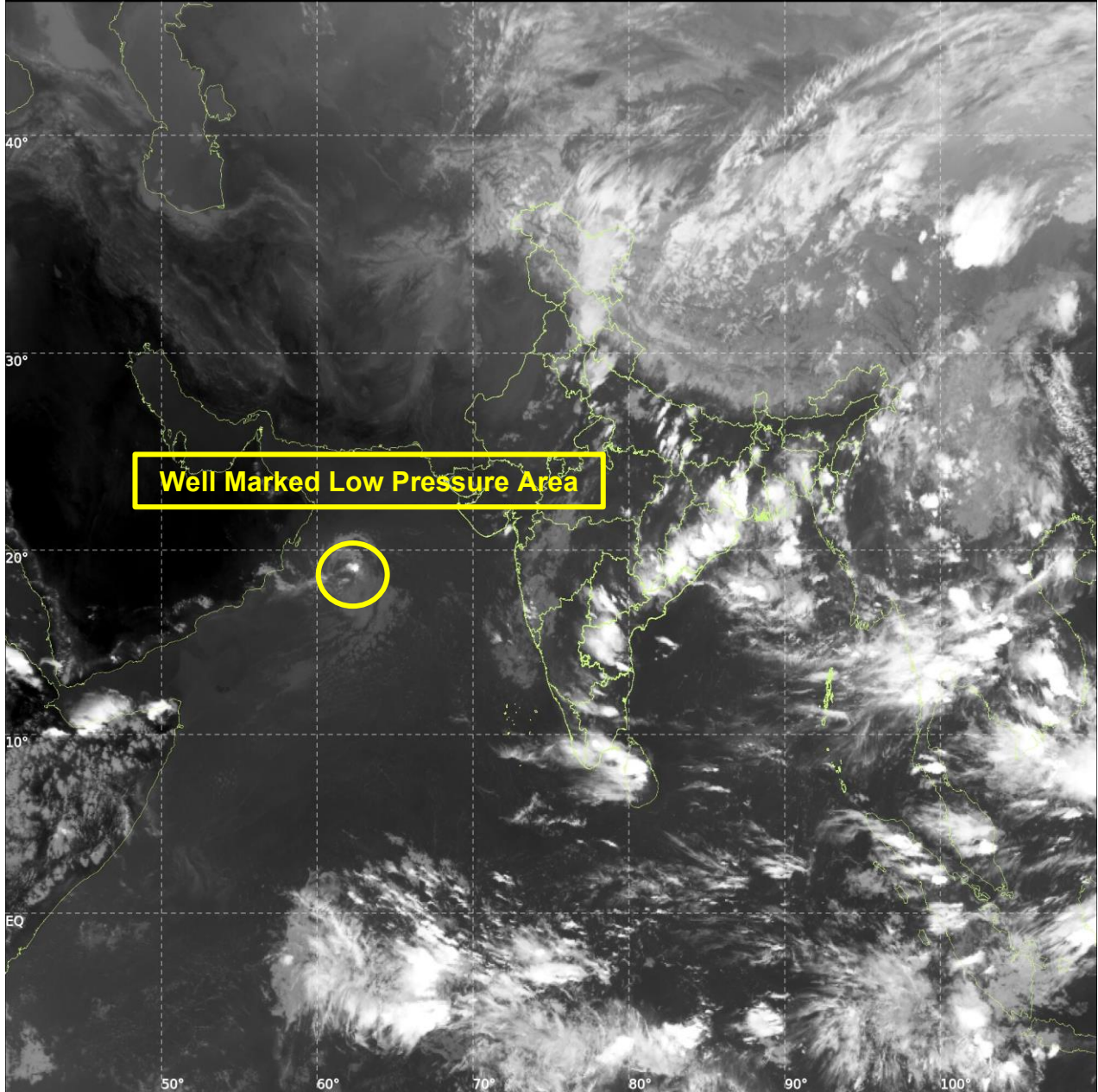
Copy to: ACWC Mumbai/ CWC Ahmedabad/CWC Thiruvananthapuram/Meteorological Centres /Ahmedabad/Goa/Bengaluru/Aminidivi



INSAT-3DS IMG, Thermal Infrared1 Count @ 10.83 μm
GMT:07-10-2025/(1300-1327) IST:07-10-2025/(1830-1857)
LIC MERCATOR (LINEAR STRETCH: 1%)

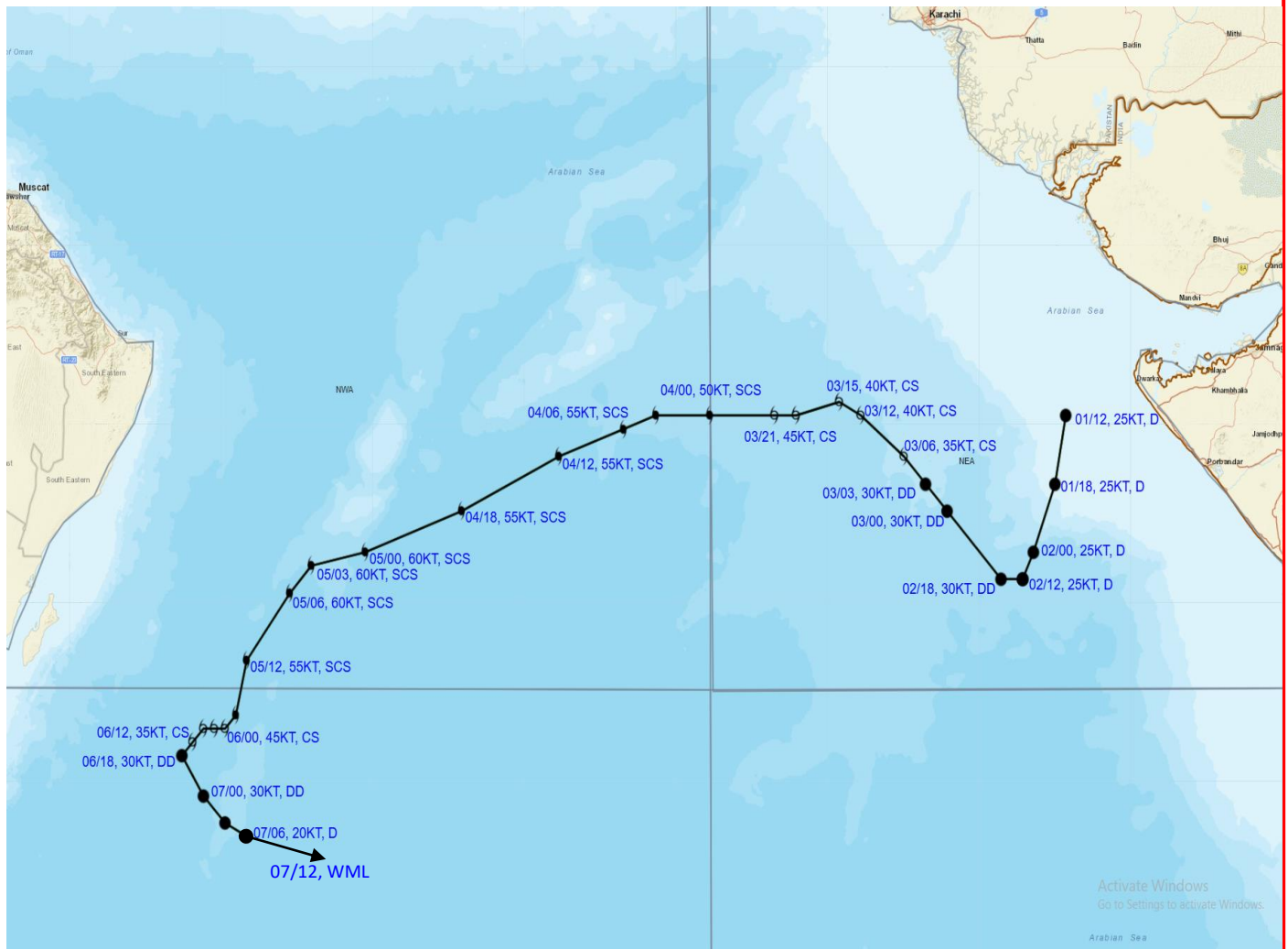
410

896





OBSERVED TRACK OF SEVERE CYCLONIC STORM 'SHAKHTI' OVER NORTHEAST ARABIAN SEA DURING 1st- 7TH OCTOBER, 2025



DATE/TIME IN UTC

IST = UTC + 0530

L: LOW PRESSURE AREA

WML: WELL MARKED LOW PRESSURE AREA

D: DEPRESSION (17-27 KT)

DD: DEEP DEPRESSION (28-33 KT)

CS: CYCLONIC STORM (34-47 KT)

SCS: SEVERE CYCLONIC STORM (48-63 KT)

VSCS: VERY SEVERE CYCLONIC STORM (64-89 KT)

ESCS: EXTREMELY SEVERE CYCLONIC STORM (90-119 KT)

SuCS: SUPER CYCLONIC STORM ≥ 120 KT

1 KT = 1.85 KMPH



LESS THAN 34 KT



34-47 KT



≥ 48 KT



OBSERVED TRACK

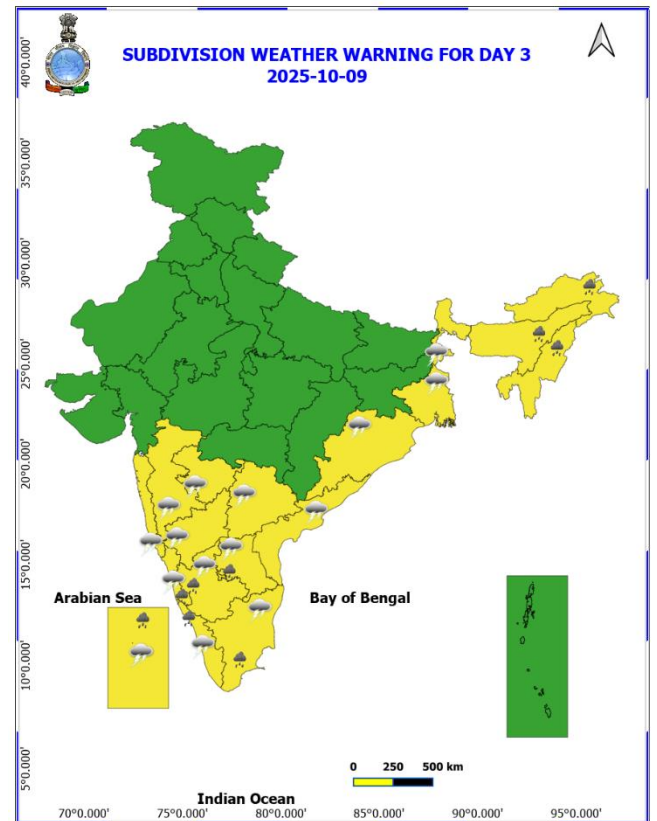
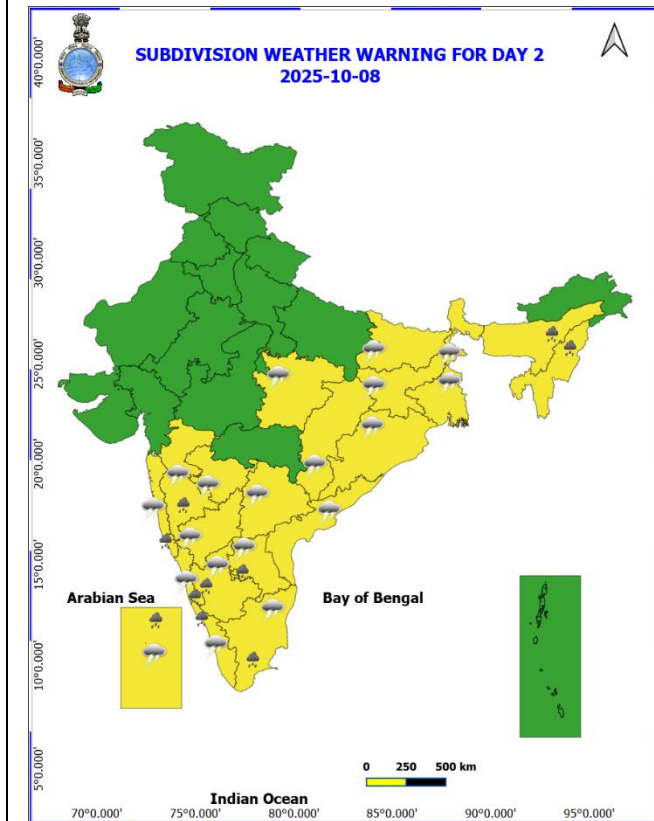
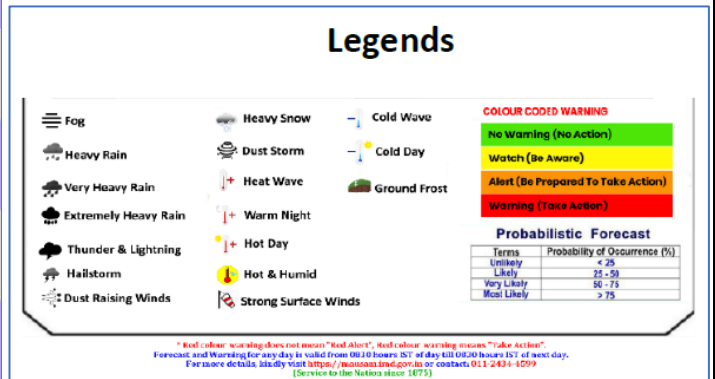
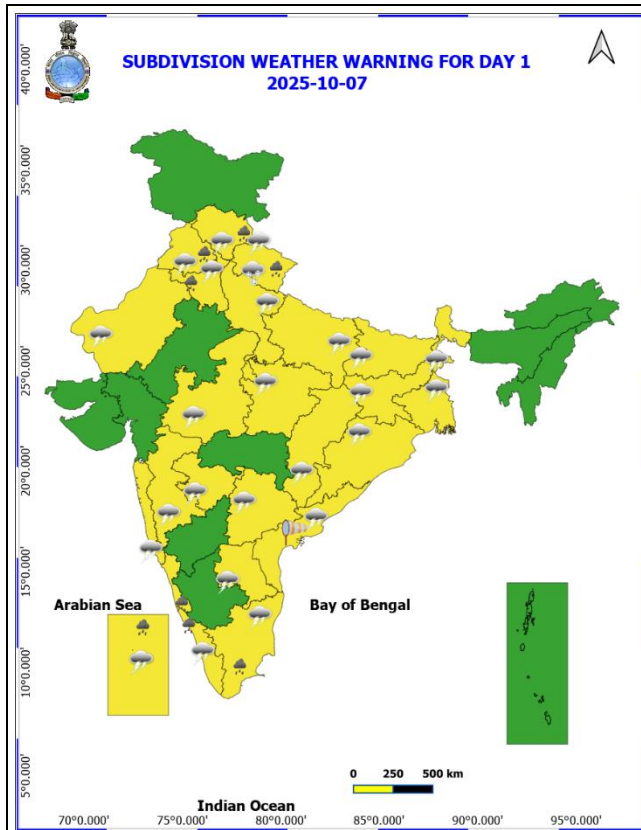


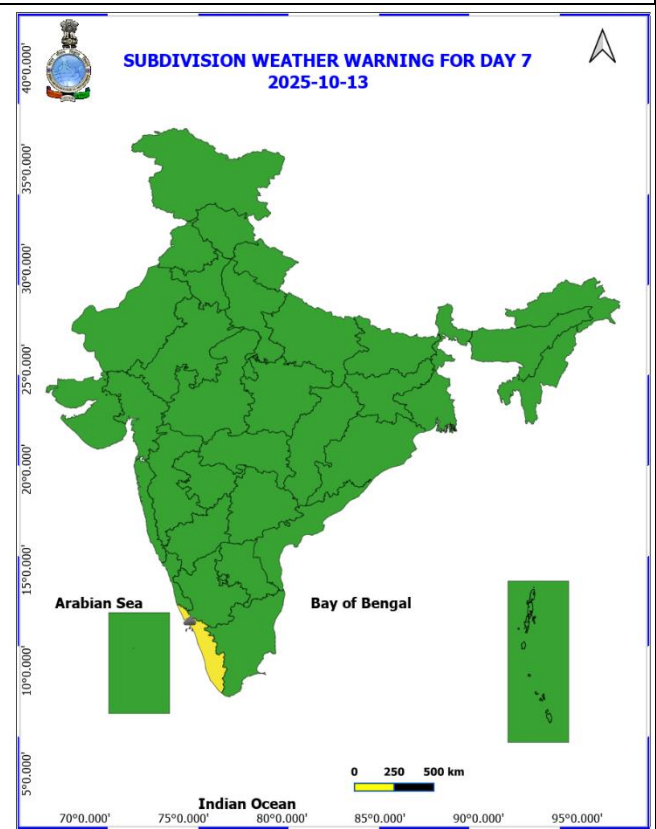
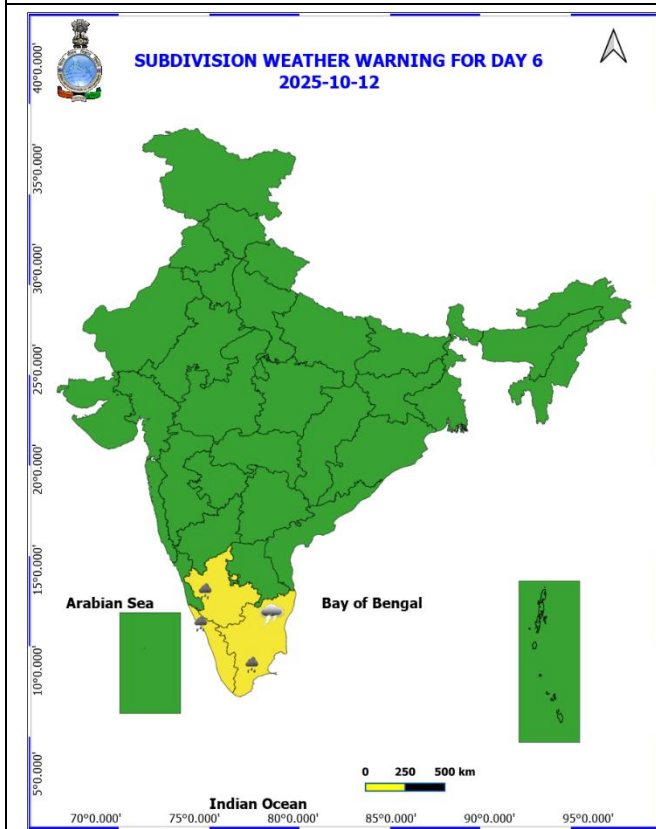
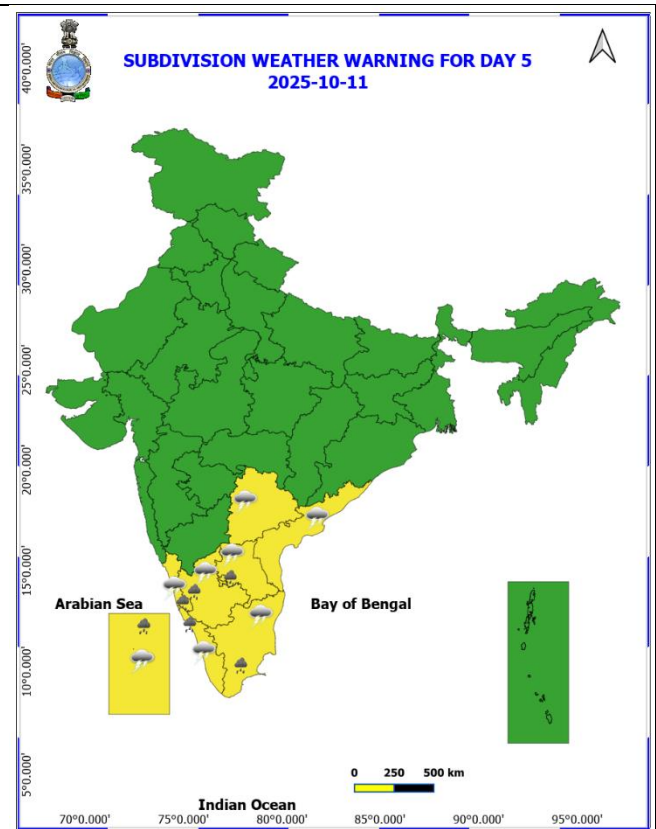
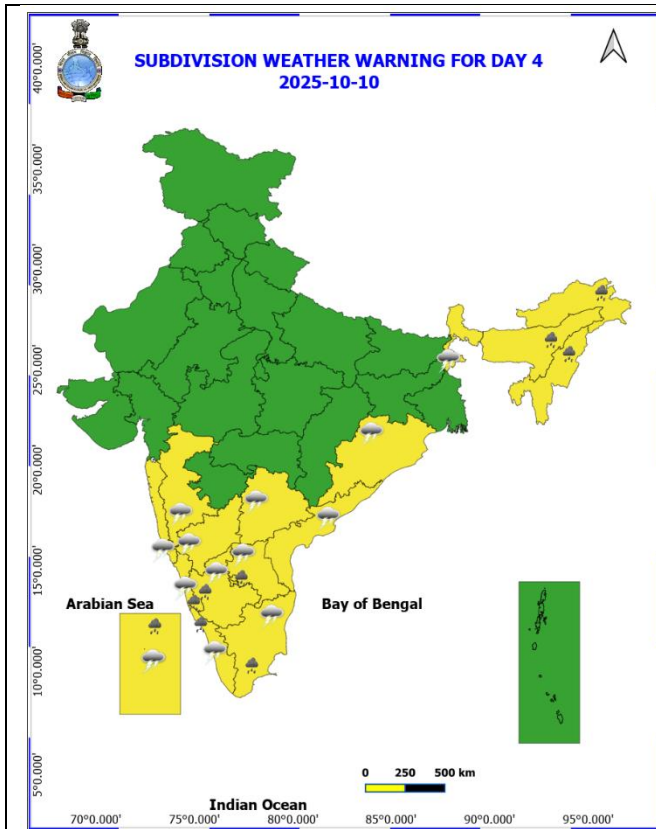
FORECAST TRACK



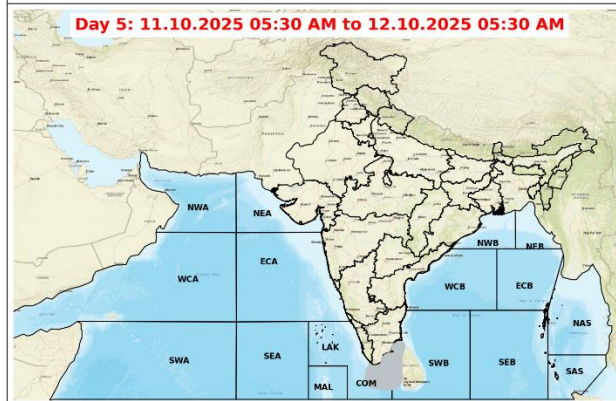
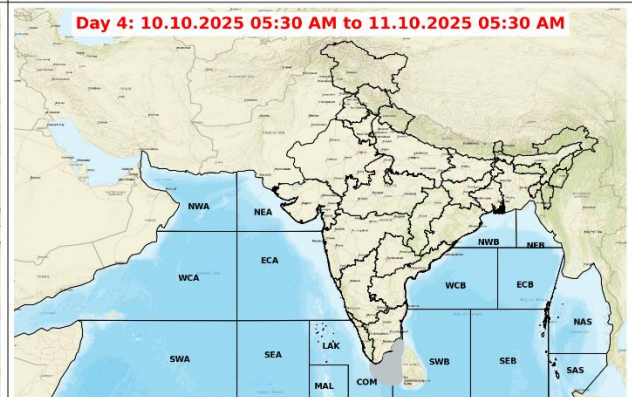
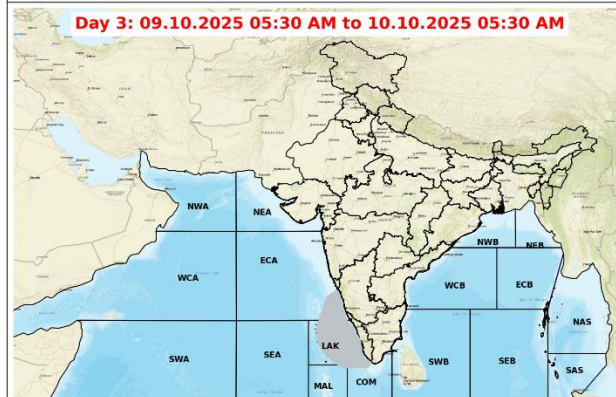
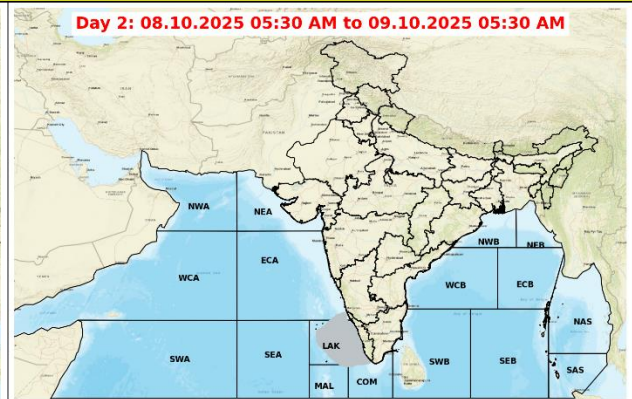
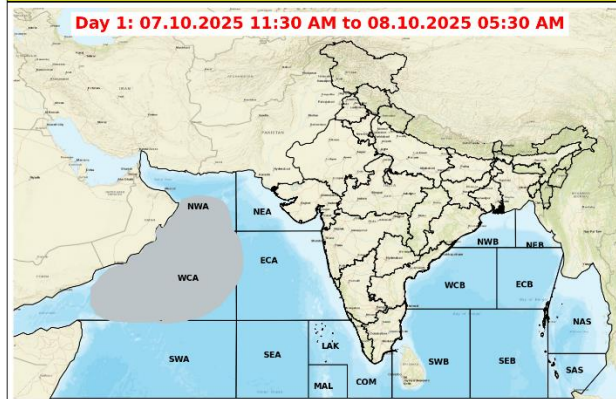
CONE OF UNCERTAINTY

Weather Warning Graphics





Fishermen Warning Graphics



Legend

Squally Weather with wind speed 35-45 kmph gusting to 55 kmph	Squally wind with speed 55-65 kmph gusting to 75 kmph
Squally Weather with wind speed 40-50 kmph gusting to 60 kmph	CS with Gale winds with speed 60-80 kmph gusting to 90 kmph
Squally Weather with wind speed 45-55 kmph gusting to 65 kmph	SCS with Gale wind speed 90-110 kmph gusting to 120 kmph
Squally wind with speed 45-55 kmph gusting to 65 kmph	VSCS with Gale wind speed 120-165 kmph gusting to 185 kmph
Squally wind with speed 50-60 kmph gusting to 70 kmph	ESCS with Gale wind speed 165-220 kmph gusting to 245 kmph

Fishermen are advised not to venture into the marked areas.